

# HOUSE & LAND FROM \$395,000

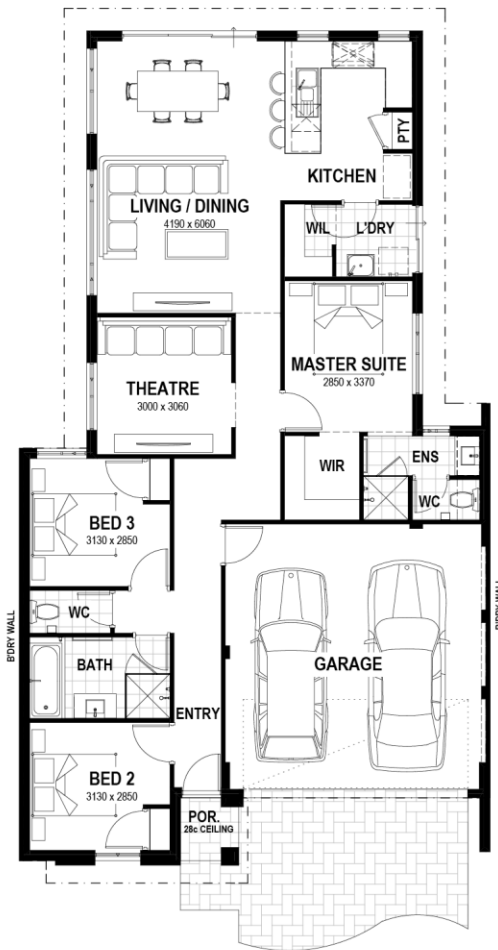
L2728 Cranleigh Rd, Dayton



LOT SIZE 316m<sup>2</sup>

HOUSE SIZE 159m<sup>2</sup>

LOT WIDTH 10.5m



- Intelligent layout maximises on space.
- Master suite includes double built-in sliding robes.
- Stylish kitchen with tons of bench space.
- Children's wing includes two large bedrooms with built-in robes.
- Summit Homes Group Quality
- Direct Access to Site Supervisor

Juno 10.5



Disclaimer: New Generation Homes is not the owner of the land. New Generation Homes has permission from the owner of the land to advertise this House and Land ("H&L") package at the specified price. A separate H&L contract will be generated by New Generation Homes and the relevant developer. At the time of listing, the price was current and the land is still available for sale. The land price does not include transfer duty, settlement costs and any other fees associated with the settlement of the land. Images used are for illustrative purposes only. BC 10689.



POWERED BY THE  
STRENGTH OF

