



Images for illustration purposes only

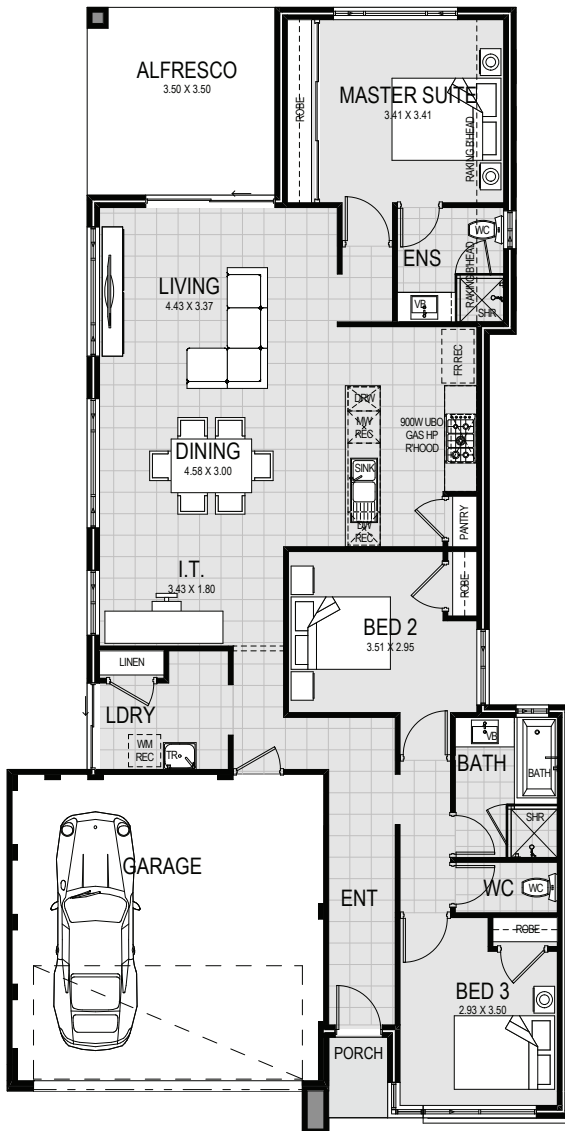
## The Essentials Range

# Archer House and land package from \$378,950

Lot 2730 Cranleigh Street  
**DAYTON**  
 Lot Size 316m<sup>2</sup>

### Living areas

House	127.29m <sup>2</sup>
Alfresco	12.25m <sup>2</sup>
Garage	35.03m <sup>2</sup>
Porch	1.65m <sup>2</sup>
<b>Total</b>	<b>176.22m<sup>2</sup></b>



### Inclusions

- ✓ Ducted reverse cycle air conditioning
- ✓ Stone benchtops throughout
- ✓ High ceilings throughout
- ✓ LED lighting throughout
- ✓ 900mm stainless steel appliances
- ✓ Carpets to all bedrooms and theatre\*
- ✓ Main area floor tiling
- ✓ Window coverings throughout
- ✓ 2m high glass pivot doors to showers
- ✓ White china basins to vanities
- ✓ Flick mixer tapware throughout
- ✓ Soft close cupboards & drawers
- ✓ Two colour render to front elevation
- ✓ 6 months maintenance period
- ✓ Lifetime structural guarantee



**newchoice**  
 homes

\*Terms & conditions apply. ACL 391237. BC13070